



REGIONAL SPECIALISED METEOROLOGICAL CENTRE-TROPICAL CYCLONES, NEW DELHI TROPICAL WEATHER OUTLOOK

DEMS-RSMC TROPICAL CYCLONES NEW DELHI DATED 14.05.2024

TROPICAL WEATHER OUTLOOK FOR NORTH INDIAN OCEAN (THE BAY OF BENGAL AND THE ARABIAN SEA) VALID FOR NEXT 168 HOURS ISSUED AT 0600 UTC OF 14.05.2024 BASED ON 0300 UTC OF 14.05.2024.

BAY OF BENGAL:

MODERATE TO INTENSE CONVECTION LAY OVER SOUTHEAST AND ADJOINING EASTCENTRAL BAY OF BENGAL IN ASSOCIATION WITH A FEEBLE CYCLONIC CIRCULATION AT LOWER LEVELS AS ALSO OBSERVED THROUGH LATEST OCEANSAT-3 IMAGERY.

SCATTERED LOW AND MEDIUM CLOUDS WITH EMBEDDED INTENSE TO VERY INTENSE CONVECTION LAY OVER SOUTH ADJOINING CENTRAL BAY OF BENGAL (MINIMUM CLOUD TOP TEMPERATURE -83 DEG CEL) AND MODERATE TO INTENSE CONVECTION LAY OVER ANDAMAN SEA.

***PROBABILITY OF CYCLOGENESIS (FORMATION OF DEPRESSION) DURING NEXT 168 HRS:**

24 HOURS	24-48 HOURS	48-72 HOURS	72-96 HOURS	96-120 HOURS	120-144 HOURS	144-168 HOURS
NIL	NIL	NIL	NIL	NIL	NIL	NIL

***NOTE: EVERY 24HR FORECAST IS VALID UPTO 0300 UTC (0830 IST) OF NEXT DAY**

ARABIAN SEA:

A FRESH CYCLONIC CIRCULATION LAY OVER SOUTHEAST ARABIAN SEA & ADJOINING KERALA AND EXTENDING UPTO 1.5 KM ABOVE MEAN SEA LEVEL AT 0300 UTC OF TODAY, 14TH MAY, 2024.

YESTERDAYS CYCLONIC CIRCULATION OVER COMORIN AREA LAY OVER NORTH EQUATORIAL INDIAN OCEAN & ADJOINING COMORIN AREA BETWEEN 1.5 & 3.1 KM ABOVE MEAN SEA LEVEL AT 0300 UTC OF TODAY, 14TH MAY, 2024.

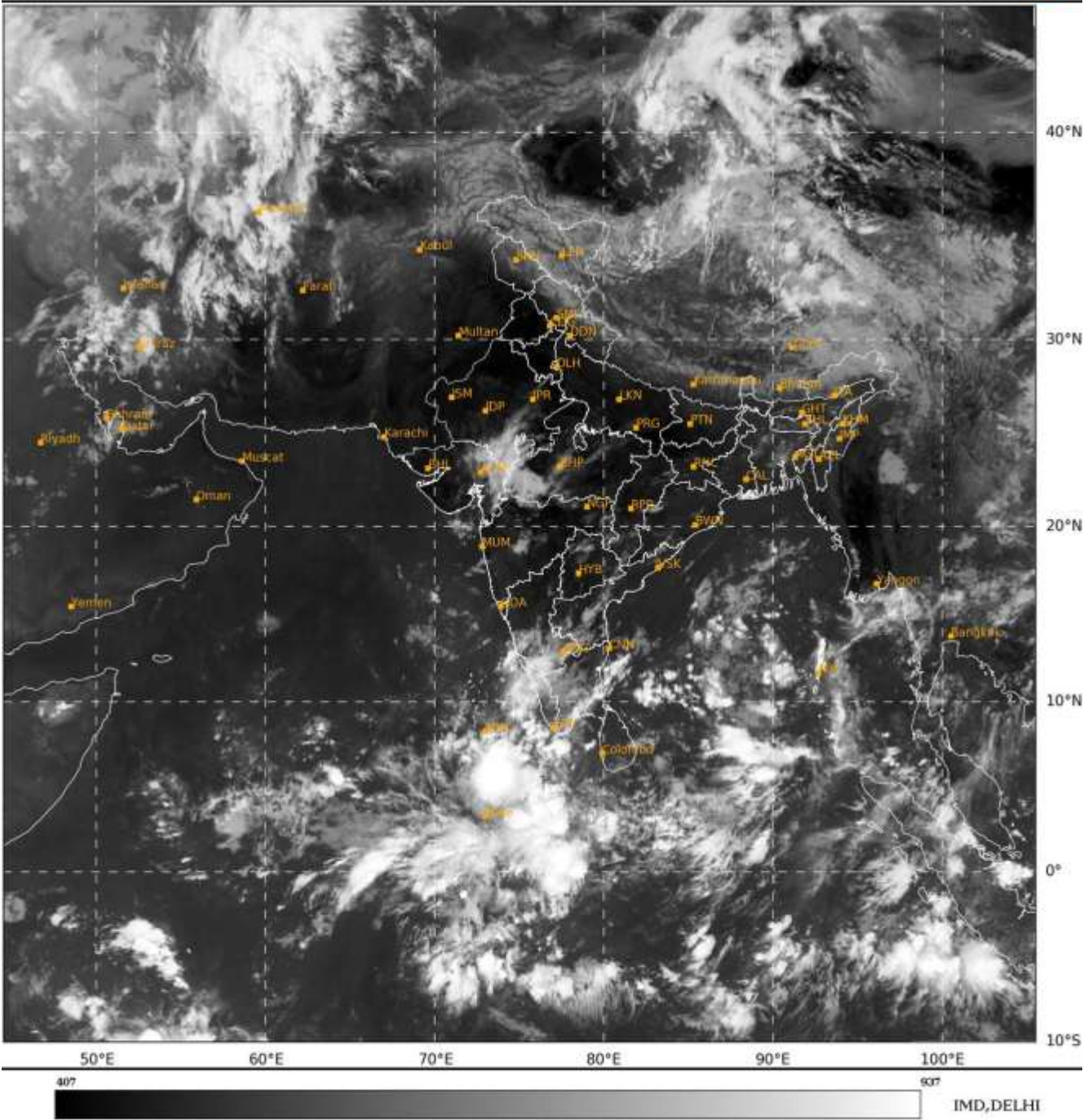
SCATTERED TO BROKEN LOW AND MEDIUM CLOUDS WITH EMBEDDED INTENSE TO VERY INTENSE CONVECTION LAY OVER SOUTHEAST ARABIAN SEA MALDIVES AREA & COMORIN AREA (MINIMUM CLOUD TOP TEMPERATURE -93 DEG CEL). SCATTERED LOW AND MEDIUM CLOUDS WITH EMBEDDED ISOLATED WEAK CONVECTION LAY OVER EASTCENTRAL ARABIAN SEA.

***PROBABILITY OF CYCLOGENESIS (FORMATION OF DEPRESSION) DURING NEXT 168 HRS:**

24 HOURS	24-48 HOURS	48-72 HOURS	72-96 HOURS	96-120 HOURS	120-144 HOURS	144-168 HOURS
NIL	NIL	NIL	NIL	NIL	NIL	NIL

***NOTE: EVERY 24HR FORECAST IS VALID UPTO 0300 UTC (0830 IST) OF NEXT DAY**

REMARKS: NIL.



Cloud distribution: (a) Isolated: <25%, Scattered:25-50%, Broken: 51-75%, Solid:>75%, Convection Intensity: (a) Weak: Cloud Top Temperature (CTT) >-25°C, (b) Moderate: CTT: - 25°C to -40°C, (c) Intense: CTT: - 41°C to -70°C and (d) Very Intense: : Less than -70°C
 PROBABILITY OF CYCLOGENESIS (FORMATION OF DEPRESSION):NIL: 0%, LOW: 1-33% , MODERATE: 34-66% AND HIGH: 67-100%
 This is a guidance Bulletin for WMO/ESCAP Panel Member countries. Visit respective National websites for Country specific Bulletins